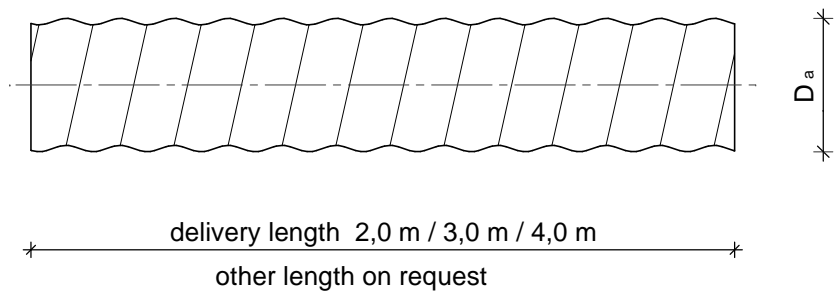
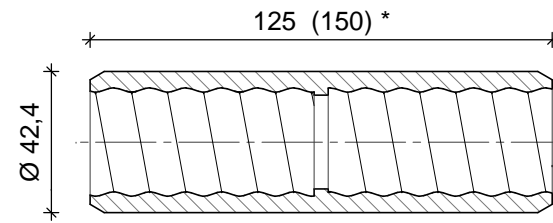


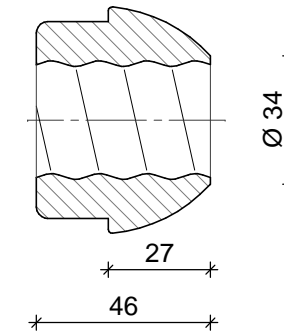
ANP - SHS bar



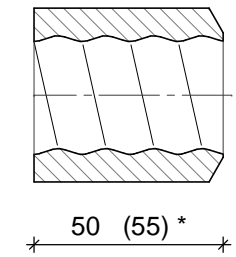
coupler
H 3003-32 (H 3004-32) *



domed nut
H 2001-32

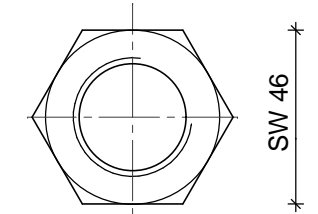
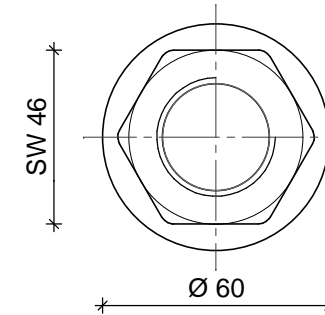


hex nut, flat - one side with bull nose
H 2963-32 (H2964-32) *



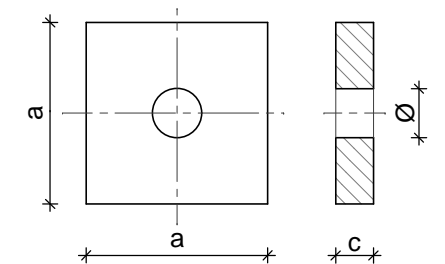
Nr.	characteristic value / type		H 0210-32				H 0250-32				H 0280-32				H 0360-32							
			32		31,34		330		370		435		510		2,6		2,9		3,4		4,0	
1	nominal external diameter	$D_{a, nom}$	mm		32		31,34															
2	external diameter (value from standard)	D_a	mm		32		31,34															
6	nominal cross-section area ¹⁾	S_0	mm ²		330		370		435		510											
7	nominal weight ²⁾	m	kg/m		2,6		2,9		3,4		4,0											
8	yield load ³⁾	$F_{p0,2, nom}$	kN		170		190		230		280											
9	ultimate load ³⁾	$F_{m, nom}$	kN		210		250		280		360											
10	yield strength ⁴⁾	$R_{p0,2}$	N/mm ²		520		520		530		550											
11	tensile strength ⁴⁾	R_m	N/mm ²		640		680		650		710											
12	$R_m / R_{p0,2}$ ⁵⁾	----	----						≥ 1,15													
13	elongation at ultimate load ⁵⁾	A_{gt}	%						≥ 5,0													
15	thread standard	----	----						ISO 10208													

- 1.) calculated from the nominal weight : $S_0 = m \times 10^3 / 7,85$
 - 2.) deviation: -4,5 bis +4,5 [%]
 - 3.) characteristic value (5%-fractile)
 - 4.) calculated from the characteristic load value and nominal weight, rounded
 - 5.) characteristic value (10%-fractile)
- E - Modul: 205.000 [N/mm²]
* dimensions for type H 0400-32



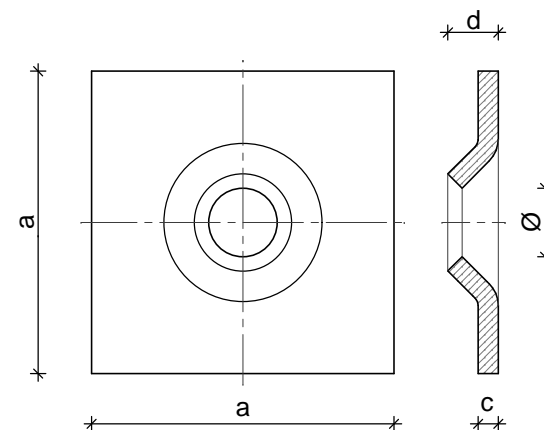
flat plate

ANP - SHS bar [-]	flat plate type [-]	a [mm]	c [mm]	Ø [mm]
H 0210-32	H 10015-32	100	15	35
H 0250-32	H 11020-32	110	20	35
H 0280-32	H 11020-32	110	20	35
H 0360-32	H 12025-32	120	25	35
H 0400-32	H 12025-32	120	25	35



domed plate

ANP - SHS bar [-]	domed plate type [-]	a [mm]	c [mm]	d [mm]	Ø [mm]
H 0210-32	H 15008-32	150	8	31	35
H 0250-32	H 15008-32	150	8	31	35
H 0280-32	H 20010-32	200	10	31	35
H 0360-32	H 20012-32	200	12	31	35
H 0400-32	H 20012-32	200	12	31	35



All rights of this drawing reserved for ANP-Systems GmbH

Rev. Ind.	Date	Remarks	Drawn	Checked
-	12.06.2012	-	La	Dipl.-Ing. S. Langer
a	08.02.2013	Techn. Daten aktualisiert	La	Dipl.-Ing. S. Langer

ANP - SYSTEMS GmbH

Christophorusstraße 12, A-5061 Elsbethen
Phone +43(0)662/253253-0, Fax -20
E-mail info@anp-systems.at



ANP - SHS
H 0210-32, H 0250-32, H 0280-32 and H 0360-32

H xxx-32_OT

Scale / Maßstab

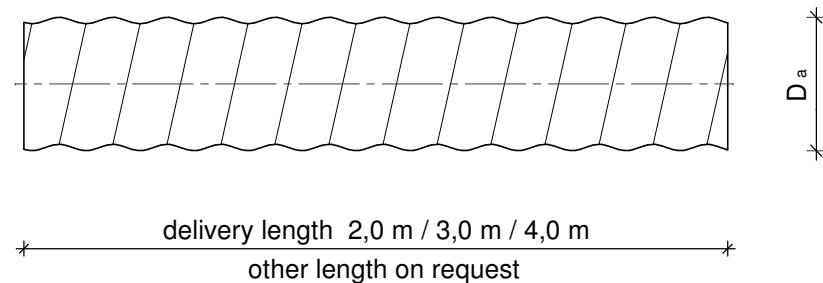
none / A3

Dimensions / Maße in mm

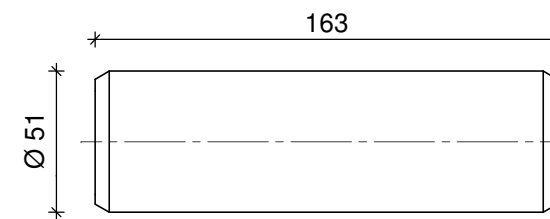
Datei: datasheet ANP-SHS-rock-nail H0210_bis_H0360-32_a.pdf
Projekt: Zulassungen / ANP-SHS_Fels-und_Bodennagel

Tb: 815

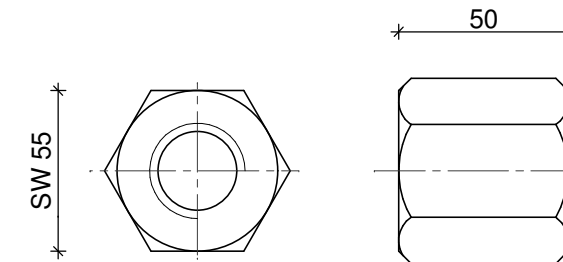
ANP - SHS bar



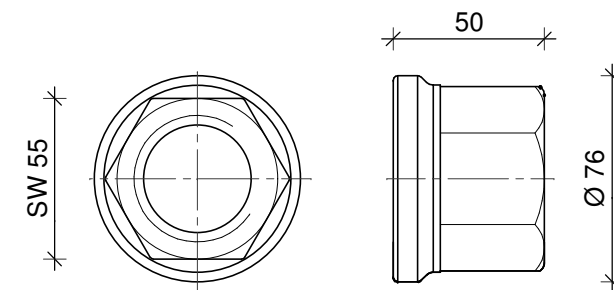
coupler
H 3003-38



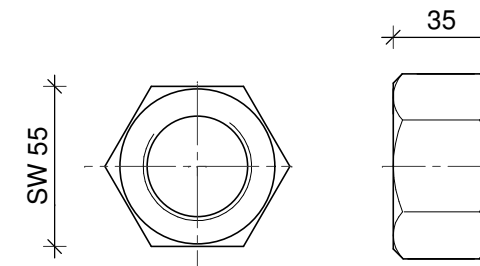
hex nut, H 2002-38



hex nut, H 2163-38



lock nut H 2040-38 and H 2040C-38



characteristic value / type			H 0420-38	H 0500-38
nominal external diameter	D _{a, nom}	mm	38	
external diameter (value from standard)	D _a	mm	37,99	
nominal cross-section area ¹⁾	S ₀	mm ²	640	740
nominal weight ²⁾	m	kg/m	5,0	5,8
yield load ³⁾	F _{p0.2, nom}	kN	350	400
ultimate load ³⁾	F _{m, nom}	kN	420	500
yield strength ⁴⁾	R _{p0.2}	N/mm ²	550	550
tensile strength ⁴⁾	R _m	N/mm ²	660	680
R _m / R _{p0.2} ⁵⁾	----	----	≥ 1,15	
elongation at ultimate load ⁵⁾	A _{gt}	%	≥ 5,0	
thread standard	----	----	ISO 10208 left hand thread	

1.) calculated from the nominal weight : S₀ = m × 10³ / 7,85

2.) deviation: -4,5 bis +4,5 [%]

3.) characteristic value (5%-fractile)

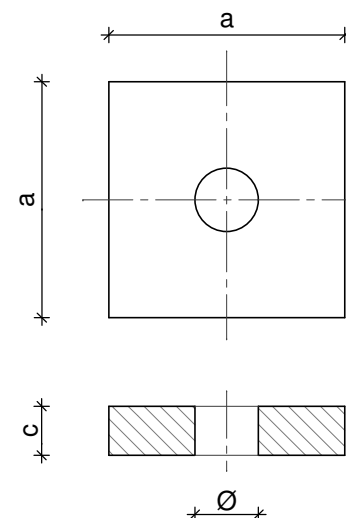
4.) calculated from the characteristic load value and nominal weight, rounded

5.) characteristic value (10%-fractile)

E - Modul: 205.000 [N/mm²]

flat plate

ANP - SHS bar [-]	flat plate type [-]	a [mm]	c [mm]	Ø [mm]
H 0420-38	H 014025-38	140	25	41
H 0500-38	H 014025-38	140	25	41



All rights of this drawing reserved for ANP-Systems GmbH

Rev. Ind.	Date	Remarks	Drawn	Checked
-	17.06.2014	-	La	Dipl.-Ing. S. Langer

ANP - SYSTEMS GmbH

Christophorusstraße 12, A-5061 Eisbethen
Phone +43(0)662/253253-0, Fax -20
E-mail info@anp-systems.at



ANP - SHS type R 38
H0420-38 and H0500-38

H_R38-pile_OT

Scale / Maßstab

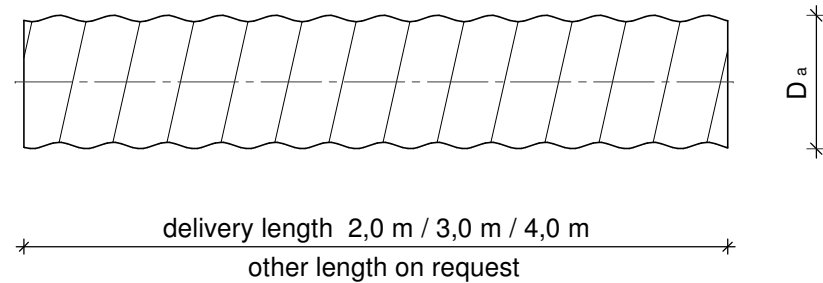
none / A3

Dimensions / Maße in mm

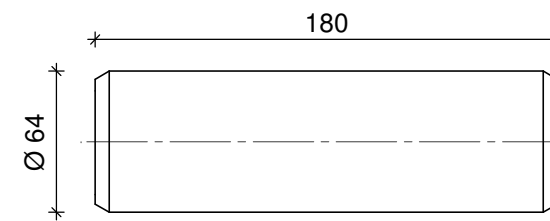
Datei: datasheet ANP-SHS-micropile H0420_bis_H0500-38.pdf
Projekt: Zulassungen / ANP-SHS_Mikropfahl

Tb: 915

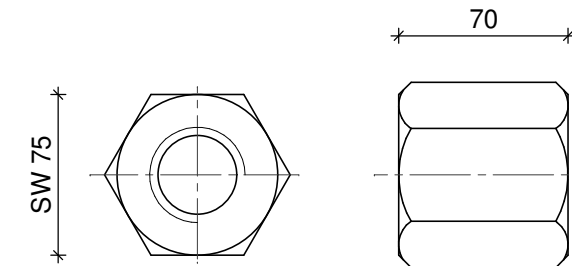
ANP - SHS bar



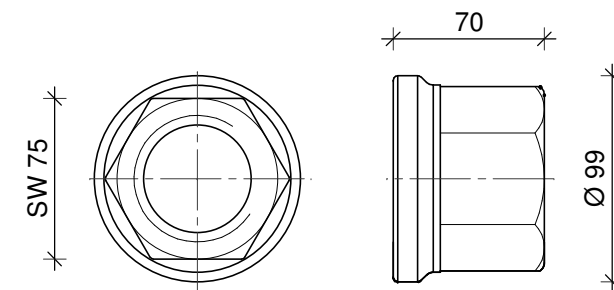
coupler
H 3003-51



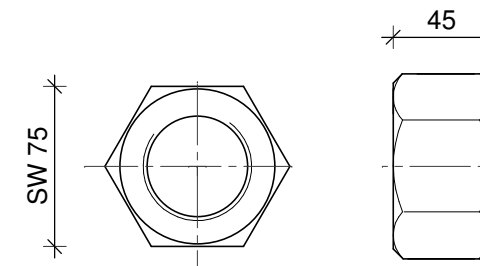
hex nut, H 2002-51



hex nut, H 2163-51



lock nut H 2040-51 and H 2040C-51



characteristic value / type			H 0630-51	H 0800-51
nominal external diameter	D _{a, nom}	mm	51	
external diameter (value from standard)	D _a	mm	49,99	
nominal cross-section area ¹⁾	S ₀	mm ²	930	1150
nominal weight ²⁾	m	kg/m	7,3	9,0
yield load ³⁾	F _{p0.2, nom}	kN	530	630
ultimate load ³⁾	F _{m, nom}	kN	630	800
yield strength ⁴⁾	R _{p0.2}	N/mm ²	570	550
tensile strength ⁴⁾	R _m	N/mm ²	680	700
R _m / R _{p0.2} ⁵⁾	----	----	≥ 1,15	
elongation at ultimate load ⁵⁾	A _{gt}	%	≥ 5,0	
thread standard	----	----	acc. to factory standard left hand thread	

1.) calculated from the nominal weight : S₀ = m × 10³ / 7,85

2.) deviation: -4,5 bis +4,5 [%]

3.) characteristic value (5%-fractile)

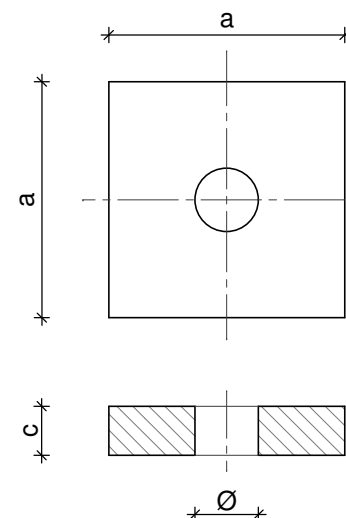
4.) calculated from the characteristic load value and nominal weight, rounded

5.) characteristic value (10%-fractile)

E - Modul: 205.000 [N/mm²]

flat plate

ANP - SHS bar [-]	flat plate type [-]	a [mm]	c [mm]	Ø [mm]
H 0630-51	H 16025-51	160	25	53
H 0800-51	H 18030-51	180	30	53



All rights of this drawing reserved for ANP-Systems GmbH

Rev. Ind.	Date	Remarks	Drawn	Checked
-	17.06.2014	-	La	Dipl.-Ing. S. Langer

ANP - SYSTEMS GmbH

Christophorusstraße 12, A-5061 Eisbethen
Phone +43(0)662/253253-0, Fax -20
E-mail info@anp-systems.at



ANP - SHS type R 51
H0630-51 and H0800-51

H_R51-pile_OT

Scale / Maßstab

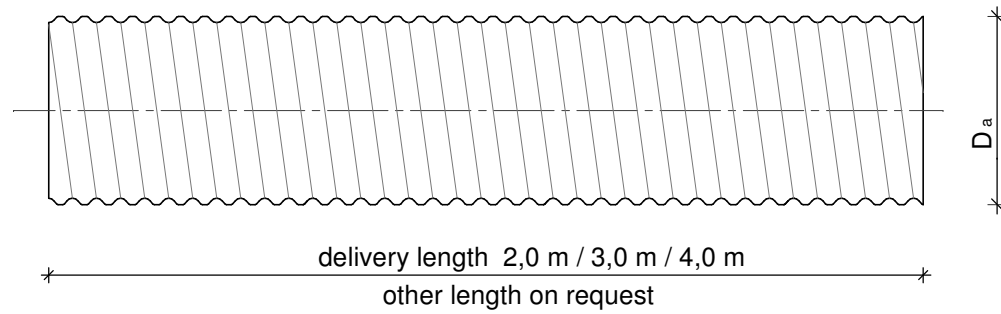
none / A3

Dimensions / Maße in mm

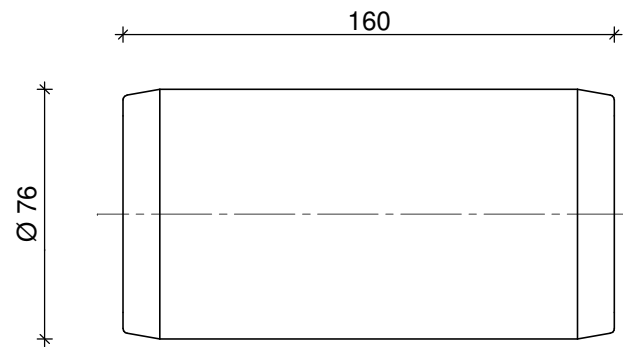
Datei: datasheet ANP-SHS-micropile H0630_bis_H0800-51.pdf
Projekt: Zulassungen / ANP-SHS_Mikropfahl

Tb: 915

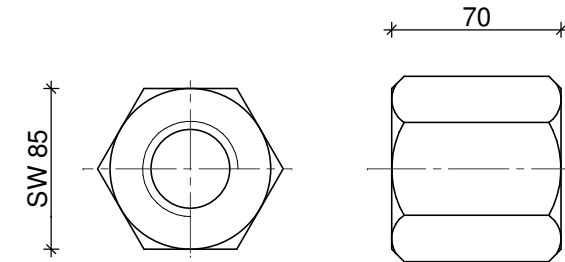
ANP - SHS bar



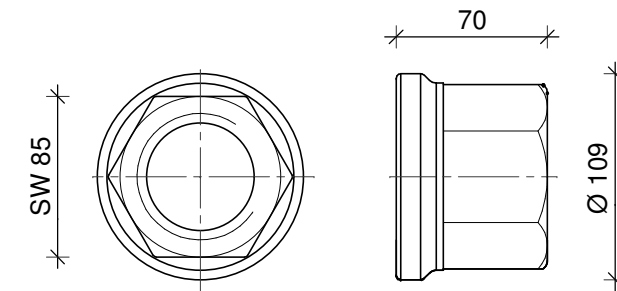
coupler
H 3003-64



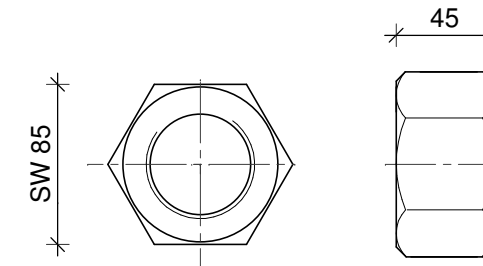
hex nut, H 2002-64



hex nut, H 2163-64



lock nut H 2040-64 and H 2040C-64



characteristic value / type			H 1000-64	H 1200-64
nominal external diameter	$D_{a, nom}$	mm	64	
external diameter (value from standard)	D_a	mm	63,8	
nominal cross-section area ¹⁾	S_0	mm ²	1470	1720
nominal weight ²⁾	m	kg/m	11,5	13,5
yield load ³⁾	$F_{p0.2, nom}$	kN	800	950
ultimate load ³⁾	$F_{m, nom}$	kN	1000	1200
yield strength ⁴⁾	$R_{p0.2}$	N/mm ²	550	560
tensile strength ⁴⁾	R_m	N/mm ²	690	700
$R_m / R_{p0.2}$ ⁵⁾	----	----	≥ 1,15	
elongation at ultimate load ⁵⁾	A_{gt}	%	≥ 5,0	
thread standard	----	----	acc. to factory standard right hand round thread	

1.) calculated from the nominal weight : $S_0 = m \times 10^3 / 7,85$

2.) deviation: -4,5 bis +7,0 [%]

3.) characteristic value (5%-fractile)

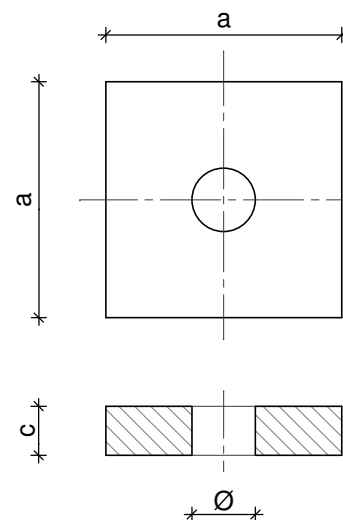
4.) calculated from the characteristic load value and nominal weight, rounded

5.) characteristic value (10%-fractile)

E - Modul: 205.000 [N/mm²]

flat plate

ANP - SHS bar [-]	flat plate type [-]	a [mm]	c [mm]	Ø [mm]
H 1000-64	H 20030-64	200	30	67
H 1200-64	H 20035-64	200	35	67



All rights of this drawing reserved for ANP-Systems GmbH

Rev. Ind.	Date	Remarks	Drawn	Checked
-	17.06.2014	-	La	Dipl.-Ing. S. Langer

ANP - SYSTEMS GmbH

Christophorusstraße 12, A-5061 Eisbethen
Phone +43(0)662/253253-0, Fax -20
E-mail info@anp-systems.at



ANP - SHS type RR 64
H1000-64 and H1200-64

H_RR64-pile_OT

Scale / Maßstab

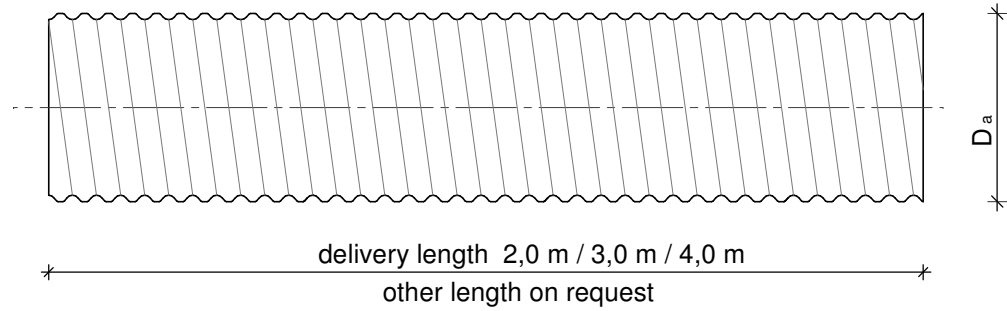
none / A3

Dimensions / Maße in mm

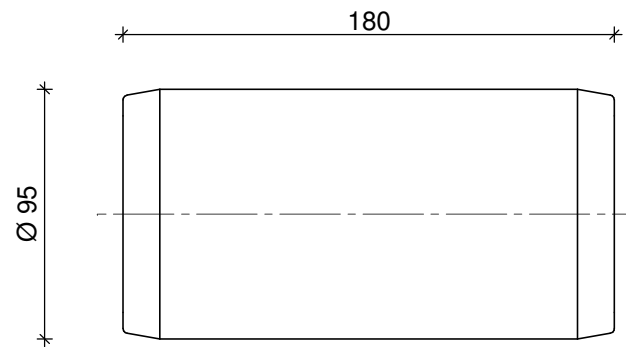
Datei: datasheet ANP-SHS-micropile H1000_bis_H1200-64.pdf
Projekt: Zulassungen / ANP-SHS_Mikropfahl

Tb: 915

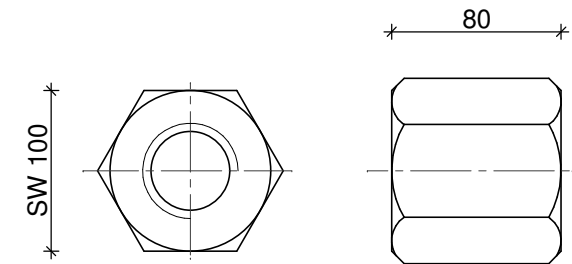
ANP - SHS bar



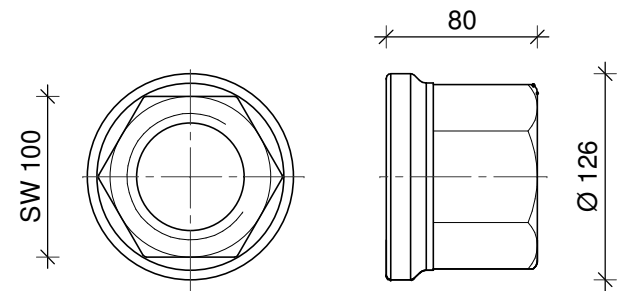
coupler
H 3003-76



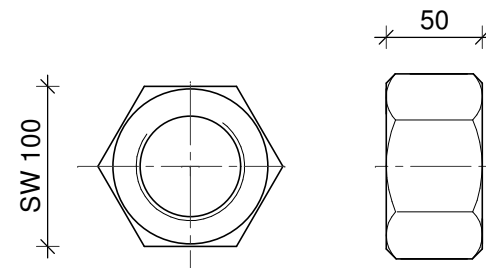
hex nut, H 2002-76



hex nut, H 2163-76



lock nut H 2040-76 and H 2040C-76

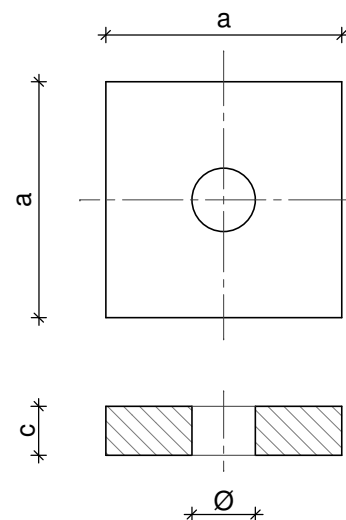


characteristic value / type			H 1400-76	H 1600-76	H 1800-76
nominal external diameter	$D_{a, nom}$	mm	76		
external diameter (value from standard)	D_a	mm	76,9		
nominal cross-section area ¹⁾	S_0	mm ²	2020	2270	2510
nominal weight ²⁾	m	kg/m	15,8	17,8	19,7
yield load ³⁾	$F_{p0.2, nom}$	kN	1080	1200	1400
ultimate load ³⁾	$F_{m, nom}$	kN	1400	1600	1800
yield strength ⁴⁾	$R_{p0.2}$	N/mm ²	540	530	560
tensile strength ⁴⁾	R_m	N/mm ²	700	710	720
$R_m / R_{p0.2}$ ⁵⁾	----	----	≥ 1,15		
elongation at ultimate load ⁵⁾	A_{gt}	%	≥ 5,0		
thread standard	----	----	acc. to factory standard right hand round thread		

- 1.) calculated from the nominal weight : $S_0 = m \times 10^3 / 7,85$
 - 2.) deviation: -4,5 bis +7,0 [%]
 - 3.) characteristic value (5%-fractile)
 - 4.) calculated from the characteristic load value and nominal weight, rounded
 - 5.) characteristic value (10%-fractile)
- E - Modul: 205.000 [N/mm²]

flat plate

ANP - SHS bar [-]	flat plate type [-]	a [mm]	c [mm]	Ø [mm]
H 1400-76	H 20040-76	200	40	80
H 1600-76	H 22045-76	220	45	80
H 1800-76	H 24045-76	240	45	80



All rights of this drawing reserved for ANP-Systems GmbH

Rev. Ind.	Date	Remarks	Drawn	Checked
-	17.06.2014	-	La	Dipl.-Ing. S. Langer

ANP - SYSTEMS GmbH

Christophorusstraße 12, A-5061 Eisbethen
Phone +43(0)662/253253-0, Fax -20
E-mail info@anp-systems.at



ANP - SHS type RR 76
H1400-76 up to H1800-76

H_RR76-pile_OT

Scale / Maßstab

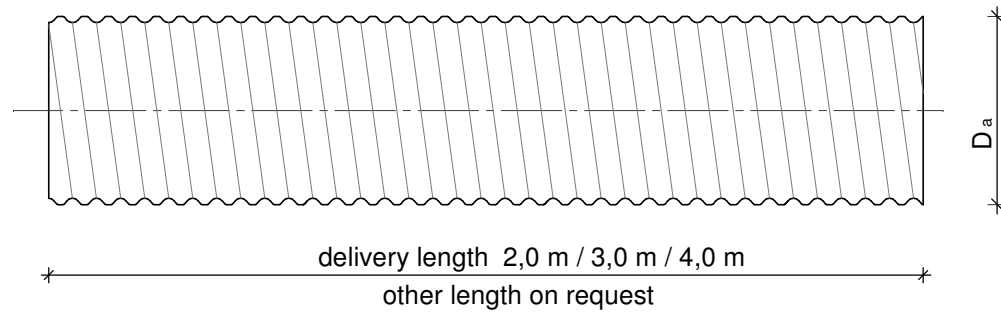
none / A3

Datei: datasheet ANP-SHS-micropile H1400_bis_H1800-76.pdf
Projekt: Zulassungen / ANP-SHS_Mikropfahl

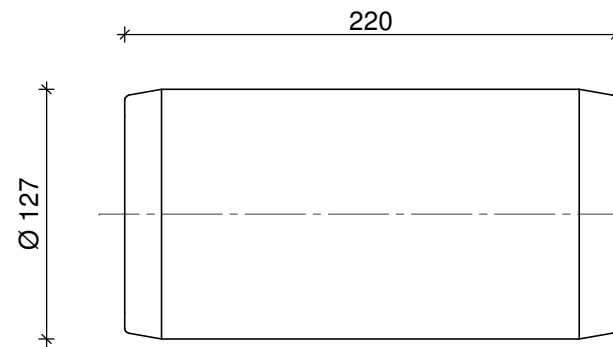
Tb: 915

Dimensions / Maße in mm

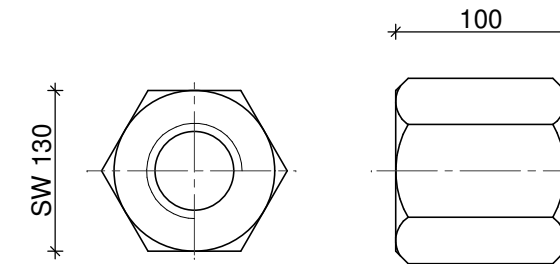
ANP - SHS bar



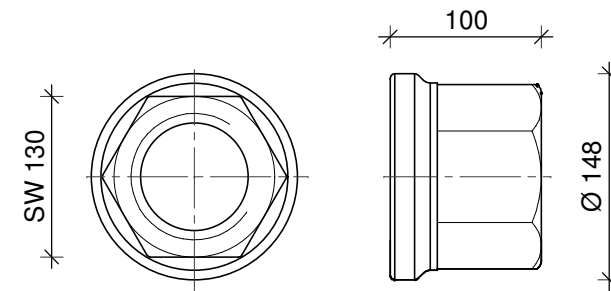
coupler
H 3003-108



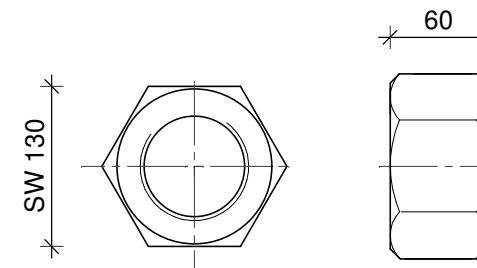
hex nut, H 2002-108



hex nut, H 2163-108



lock nut H 2040-108 and H 2040C-108



characteristic value / type			H 2400-108
nominal external diameter	$D_{a, nom}$	mm	108
external diameter (value from standard)	D_a	mm	108,1
nominal cross-section area ¹⁾	S_0	mm ²	3550
nominal weight ²⁾	m	kg/m	27,8
yield load ³⁾	$F_{p0.2, nom}$	kN	1780
ultimate load ³⁾	$F_{m, nom}$	kN	2400
yield strength ⁴⁾	$R_{p0.2}$	N/mm ²	510
tensile strength ⁴⁾	R_m	N/mm ²	680
$R_m / R_{p0.2}$ ⁵⁾	----	----	≥ 1,15
elongation at ultimate load ⁵⁾	A_{gt}	%	≥ 5,0
thread standard	----	----	acc. to factory standard right hand round thread

1.) calculated from the nominal weight : $S_0 = m \times 10^3 / 7,85$

2.) deviation: -4,5 bis +7,0 [%]

3.) characteristic value (5%-fractile)

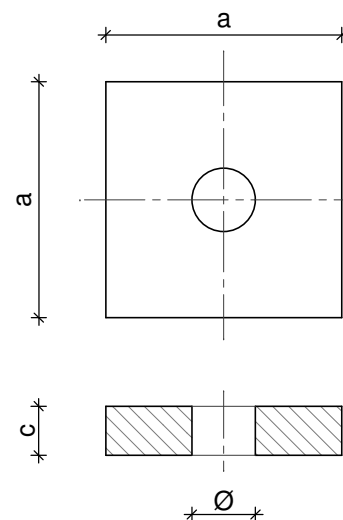
4.) calculated from the characteristic load value and nominal weight, rounded

5.) characteristic value (10%-fractile)

E - Modul: 205.000 [N/mm²]

flat plate

ANP - SHS bar [-]	flat plate type [-]	a [mm]	c [mm]	Ø [mm]
H 2400-108	H 28050-108	280	50	112



All rights of this drawing reserved for ANP-Systems GmbH

Rev. Ind.	Date	Remarks	Drawn	Checked
-	17.06.2014	-	La	Dipl.-Ing. S. Langer

ANP - SYSTEMS GmbH

Christophorusstraße 12, A-5061 Eisbethen
Phone +43(0)662/253253-0, Fax -20
E-mail info@anp-systems.at



ANP - SHS type RR 108
H2400-108

H_RR108-pile_OT

Scale / Maßstab

none / A3

Datei: datasheet ANP-SHS-micropile H2400-108.pdf
Projekt: Zulassungen / ANP-SHS_Mikropfahl

Tb: 915

Dimensions / Maße in mm